



Avtek

Present | Teach | Inspire



**PRODUCT
CATALOG
2019**

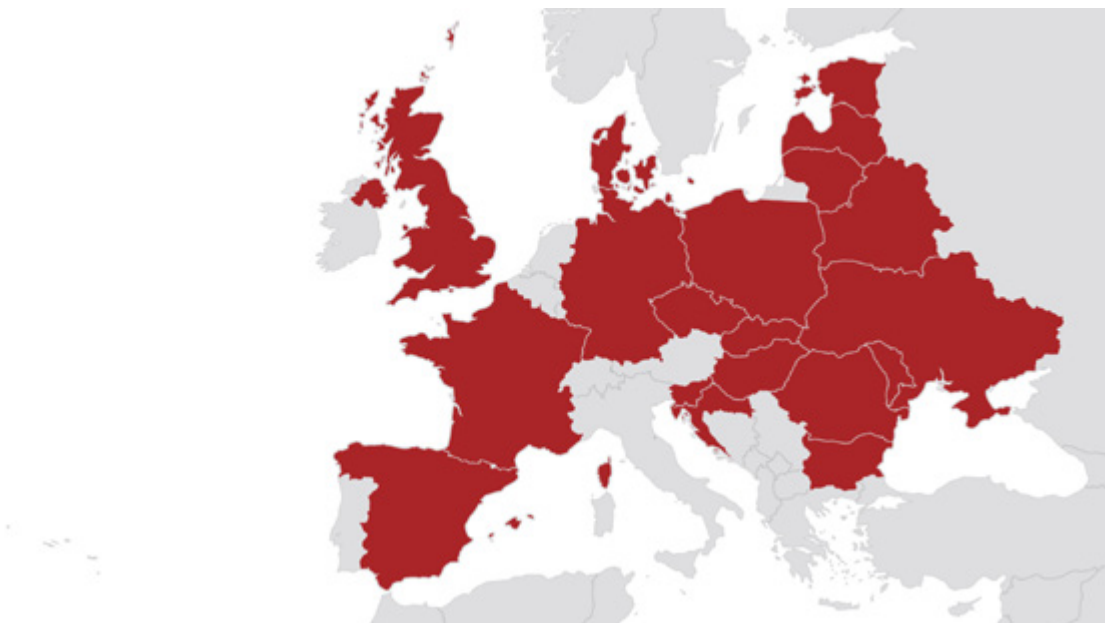


Avtek

Present | Teach | Inspire

Avtek brand belongs to ViDiS S.A., a specialized audio-video distributor and leader on the Polish market. Company **started in 2004** now owns an extensive warehouse space allowing for **high stock levels** and constant product availability. Qualified staff works hard every day to keep the offer innovative and to make sure that all Avtek products meet highest requirements of **user friendliness** and stability while maintaining **high-tech specifications**.

The whole portfolio goes through rigorous testing before being introduced to guarantee flawless operation for the customer. Avtek interactive display line is the most spectacular example of those values put into reality, with customers high trust that allowed Avtek TouchScreen line to maintain **leading position in sales on Polish market**, as well as expand abroad.



Today Avtek products are available all over Europe

Based on those values ViDiS S.A. is a leader on Polish projection screen market with **over 10.000 screens sold** each year and interactive whiteboard / interactive display markets, with Avtek products being **the biggest brand in those categories** for many years in a row.

Avtek products are not only limited to Polish market. Trust in our brand and competitiveness of our offer made it possible for our products to also be available in among others: Baltic states, Belarus, Czech Republic, Slovakia, Ukraine, Hungary, Romania, Bulgaria, Slovenia, Croatia, Serbia, Moldova, Germany, Great Britain, France, Spain, Denmark, and even Singapore.

Our mission is to continue raising the bar for our products quality, user friendliness and stability, to break technological barriers and share our work with customers wherever we can.

CONTENT

INTERACTIVE DISPLAYS	3	
INTERACTIVE WHITEBOARDS	9	
THIN / ZERO CLIENTS	13	
PROJECTION SCREENS	17	
MOUNTING SYSTEMS	25	
ACCESSORIES	31	
WARRANTY	34	



NEW REALITIES CREATED WITH TOUCH

INTERACTIVE
DISPLAYS



INTERACTIVE DISPLAYS AVTEK TOUCHSCREEN

Avtek TouchScreen 5 series is a combination of high quality LED display with interactive whiteboard. The Avtek monitors use the latest technologies providing reliability and the widest functionality on the market.

The touchscreen is an ideal alternative for traditional interactive whiteboards at schools and a great tool for use in modern business.

Choosing of the latest but already verified technologies makes the Avtek monitors both futureproof and reliable solutions for every market.



Applications of Avtek TouchScreen 5 series



Using of interactive touchscreens makes the company meetings more effective and the communication much more simple. The problems are solved easier using the team working approach with brainstorming utilizing the new technologies.



Tourist information, secretary's office or reception desk equipped with interactive touchscreen gives the employees more time for their essential work. Thanks to Avtek TouchScreen it's possible to make self-service information points where the information is much more attractive and profitable.



Interactive touchscreens in hospitals, police stations and other public services upgrade the workflow in those institutions. In case of emergency situations the work organization and communication is smooth and easy thanks to those devices.



Interactive touchscreens in shopping malls help the clients find the specific shops and the shortest way to them. Moreover it's easy to check the best offers and hot deals offered by the shops, restaurants, cinemas or fitness clubs.



Using interactive monitors during lessons in kindergartens and primary schools makes big fun of learning and it helps to keep the focus of the kids. It also helps to understand described topics and makes the kids enjoy the learning process.



Youths at junior high schools and secondary schools need much attention and it requires more effort to attract them to school. The newest technology in education such as Avtek TouchScreen Pro series is one of the ways to do it efficiently.



Lectures, exercises or laboratories at universities can be much more attractive with interactive touchscreens. It's a perfect alternative to traditional way of teaching as the technology induces bigger interaction between students.



Application of interactive monitors during conferences, presentations and trainings is now becoming popular. This visual method of communication with additional interaction looks much more professional and improves the perception of the message.

FEATURES



New generation of Android 7.0 module offers faster components and higher version of the operating system, which makes working on TouchScreen 5 even smoother than before and allows installation of more demanding Android apps



HDMI Out port in TouchScreen 5 is not only faster and newer than analog VGA, but because of the technology used it can also convert analog signal to digital one. Thanks to that it's possible to connect an external computer by VGA and send the video out by HDMI to a screen recorder or a projector.



Avtek TouchScreen 5 screens are equipped with Note, software for Windows OS that's focused on helping teachers, but will also make any business presentation easier. Note supports the same file format as Android based EasiNote, so a meeting can be started on Android EasiNote and finished on Note for Windows.



Voting tool, a new function of built-in Android, makes quick tests simple and fast. It's available on any input source and allows for asking any question, gathering answers and discussion – no matter if it's about a PowerPoint presentation, a displayed webpage or any other content displayed from an external computer.



To make meetings even clearer, TouchScreen 5 Connect screens support two-color writing at the same time. Extremely accurate touch recognition technology can recognize thickness of stylus that is touching the protective glass and assign chosen color to the pen. Every meeting where two different persons make notes will be more focused using that solution, and even single user will appreciate ability to write different notes with different colors easily.



Built-in screensharing app makes connecting 8 devices wirelessly effortless. Screen sharing application makes it easy to connect multiple devices without entangling the room in cables, while the user of the IFPD can play the role of administrator, choosing which devices should be connected and displayed on the screen. It's also possible to upgrade the screen with Avtek Share – a USB dongle that allows connecting laptops without installing any additional software, which makes it perfect for business conferences.



New annotation tool has many new features. Not only is it responsible for making notes on any image from any input source or using the screen as a whiteboard when needed – it's also equipped in timer, stop-watch, spotlight and even a voting tool!



Over-the-Air firmware upgrades ensures that the screen will always be up to date. Every user will be able to upgrade firmware version, so no new features will be missed.



Connecting interactive displays to the internet is the biggest basic thing that every user should do to increase it's potential. Both TouchScreen 5 Lite and TouchScreen 5 Connect feature WiFi connectivity – first one with included USB dongle, second one with proprietary module. Being true to the name, TS5 Connect has not only WiFi, but also Bluetooth connectivity that makes it perfect for connecting with various Bluetooth microphones or other videoconferencing solutions.



Avtek interactive screens can be used in variety of different places, that's why Avtek computers are offered in few variants that should suit all needs. In education and basic uses economical Celeron CPU will be perfect. For more advanced uses i5 CPU version will be best suited, while i7 version will be enough even for the most demanding jobs.



All Avtek OPS 4K computers are equipped with 6th generation Intel Skylake CPUs that support 4K@60Hz and SSD drives that are not only several dozen times faster than traditional HDD drives, but also more durable and quiet.



Thanks to a unique solution, USB ports located on the front of the screen are shared between Android OPS, built-in PC or other external PC when connected with Touch USB. Just change the input source and the screen will automatically detect which one is active and channel the USB ports accordingly. No more looking for correct USB ports, they're all correct!



INTERACTIVE DISPLAYS AVTEK TOUCHSCREEN

SOFTWARE

NOTE



Note is a fundamental software that enables anyone to use interactive functions offered by interactive screens. Made specifically for education environment, it gives access to wide spectrum of features: writing, editing, commenting, drawing and using all teaching tools included.

Note turns interactive screens into perfect teaching environment that builds up on TouchScreens intuitiveness and multimedia features and put at users disposal a rich set of specialized tools made for teaching school subjects.



CONNECT



Connect is a software that allows for a two-way communication between a mobile device and a Windows PC – user can mirror desktops both ways, control PowerPoints presentations, use mobile device as a visualizer or touchpad.

- Controlling presentations: using Connect one can switch between PowerPoints slides, control what slide and next and annotate on them freely.
- Shared desktop: Windows desktop can be displayed and controlled from a mobile device or vice versa: mobile desktop can be displayed on the PC – user can control both with touch on TouchScreen and mobile simultaneously.
- Touchpad function: mobile device touch interface can be used as a TouchPad to conveniently control the PC wirelessly.
- File sharing: one can send any file (be it a photo, video or a document) straight to the PC and play it and note on it instantly.

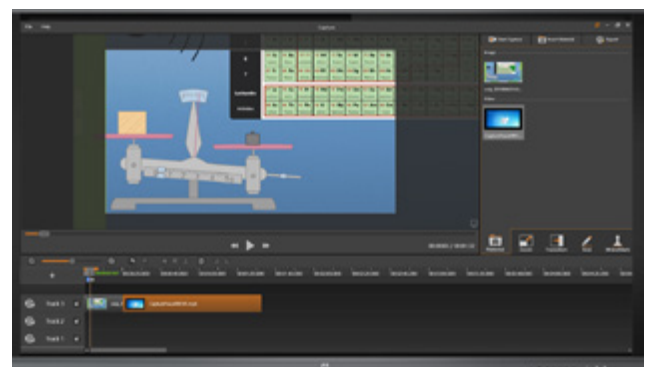


CAPTURE



Capture makes recording videos and lectures easily and without effort. It lets the user record desktop, image from camera or both, has built in simple and intuitive editing studio and allows quick uploading to cloud storage.

It's intuitive and designed to be operated by touch so recording, editing and presenting will be easy even for unexperienced users, while saving and uploading to cloud is done with one click.



TECHNICAL SPECIFICATION

Model	Touchscreen 5 Lite 55	Touchscreen 5 Lite 65	Touchscreen 5 Connect 65	Touchscreen 5 Connect 75	Touchscreen 5 Connect 86
Diagonal	55"	65"	65"	75"	86"
Aspect ratio	16:9				
Display area (mm)	1209,6 x 680,4 mm	1428,48 x 803,52 mm	1428,48 x 803,52 mm	1649,66 x 927,94 mm	1895,04 x 1065,96 mm
Resolution (px)	4K/UHD (3840x2160) @60 Hz				
Response time	<8 ms	<6 ms	<6 ms	<8 ms	<8 ms
Displayed colors	1,07 mld (10-bit)				
Brightness	300 cd/m ²		350 cd/m ²		
Contrast ratio	4000:1				
Viewing angle	178°				
Panel life time	30 000 h		50 000 h		
Speakers	2 x 10 W		2 x 16 W		
Inputs	2x HDMI 2.0, VGA, Audio		2x HDMI 2.0, VGA, Audio, AV		
Outputs	Audio		HDMI, Audio, Coax		
Communication ports	3x USB 2.0, 1x USB 3.0, RS232, RJ45		4x USB 2.0, 2x USB 3.0, RS232, RJ45		
Sensing type	IR (20 point touch)				
Touch response time	<15 ms		<7 ms		
Touch Comm. Port	USB		USB		
Surface protection	Toughened Glass with Level 7 of Mohs Standard, 4 mm antiglare tempered glass				
Touch resolution	32.767 x 32.767				
Overall Power	250 W	250 W	300 W	450 W	500 W
Standby Power	< 0,5 W				
Dimension LxHxW (mm)	1268,4 x 765,2 x 112,4	1521 x 915 x 98	1521,4 x 914 x 98	1763 x 1034 x 100	1988 x 1178 x 100
Package dimension LxHxW (mm)	1428 x 878 x 220	1697 x 1071 x 220	1697 x 1071 x 220	1913 x 1225 x 280	2211 x 1370 x 280
Net weight	30 kg	44 kg	45,6 kg	58,6 kg	75,5 kg
Gross weight	40 kg	55 kg	55 kg	78 kg	105 kg
VESA	400 x 400	600 x 400	600 x 400	800 x 400	800 x 600
Accessories	Power cord (3 m), VGA cable (3 m), USB cable (5 m), audio cable mj 3,5 mm (5 m), plastic pen (3 pcs), remote controller, quick guide, CD or USB flash drive with drivers and software				
WiFi/Bluetooth	TP-Link WiFi dongle		Avtek WiFi/Bluetooth module		
Product code	1TV135	1TV140	1TV145	1TV150	1TV155

Avtek OPS 4K i3

Avtek OPS 4K i5

Computer parameters	Intel i3 6100 Dual Core 3.7 GHz, 4GB, 128 GB SSD	Intel i5 6400 3.3 GHz, 4GB, 128 GB SSD
Built-in cards	Integrated graphic, sound HD and network	
Wi-fi	Wi-fi 802.11ac	
USB 3.0	6 ports in USB 3.0 standard	
Lan	RJ45	
Outputs	mini-jack 3.5mm, mini display port, HDMI, VGA	
Inputs	Microphone	
Product code	1TV133	1TV084



SENSITIVE DIMENSION OF COMMUNICATION

INTERACTIVE
WHITEBOARDS



INTERACTIVE WHITEBOARDS AVTEK TT-BOARD

Avtek TT-BOARD interactive whiteboards stand out by combining exceptionally wide functionality with accessible price. Common parts in all boards are precise IR touch technology, aluminum frame and shortcut bars on both sides that give quick access to key software functions. Basic models have a penray, painted steel surface and 6 touch points, while Pro series is distinguished by 10 touch points, interactive penray that allows user to easily change pen colors and ceramic PolyVision e3 surface with lifetime warranty that ensures durability and dry erase ability, while displayed image is kept with very high quality.

Every board comes with Avtek Interactive Suite software.



* Pro models only

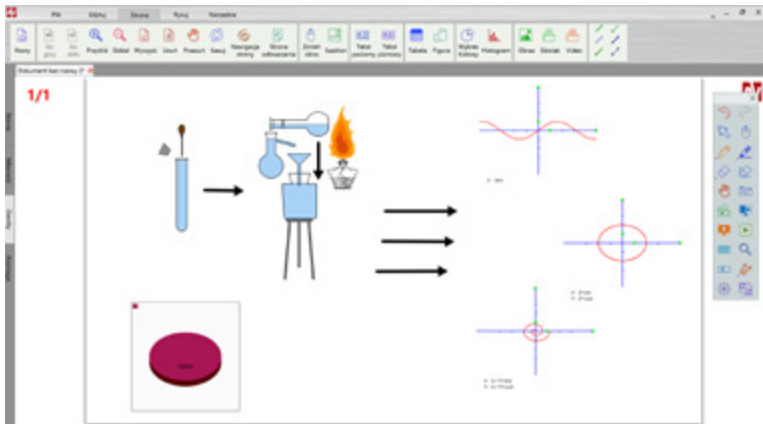
PRODUCT FEATURES

- TT-BOARD can be operated by finger or any other stylus
- 6 (TT-BOARD 80, 90) and 10 (Pro series) touch points allow cooperation of number of students together using one whiteboard
- Damage resistant surface fits classroom environment perfectly and can be used by children of all ages
- Quick-use shortcut bars on the sides makes using this interactive whiteboard more intuitive
- Dry erase painted steel (TT-BOARD 80, 90) and PolyVision e3 ceramic surface provides many advantages:
 - Allows attaching magnets
 - Projected image has very high quality
 - High resistance to damage; moreover, damage to surface does not affect touch recognition
- While painted steel surface is designed for occasional use of whiteboard markers, TT-BOARD Pro IWBs with lifetime warranty PolyVision e3 surface can be used as normal whiteboard
- Plug&Play, which means that board does not require drivers to work with Windows7, 8, 8.1 and 10 computers

TECHNICAL SPECIFICATION

Model	TT-BOARD 80 Pro	TT-BOARD 90 Pro	TT-BOARD 80	TT-BOARD 90
Technology	IR		IR	
Touch points	10		6	
Board diagonal	83"	93"	83"	93"
Working area diagonal	80"	90"	80"	90"
Surface type	Magnetic Matte Dry-erase PolyVision e3 porcelain		Magnetic Matte Dry-erase	
Writing method	Finger or any other stylus		Finger or any other stylus	
Aspect ratio	4:3	16:10	4:3	16:10
Resolution	32 768 x 32 768		32 768 x 32 768	
Accuracy	<0,05 mm		<0,05 mm	
Cursor speed	120"/second		120"/second	
Reaction time	First dot 16 ms, continuous line 8 ms		First dot 16 ms, continuous line 8 ms	
Communication	USB		USB	
Shortcut bars	Both sides		Both sides	
Board dimensions	1720 x 1250 x 36 mm	2059 x 1259 x 36 mm	1720 x 1250 x 36 mm	2059 x 1259 x 36 mm
Working area dimensions	1680 x 1180 mm	1974 x 1174 mm	1680 x 1180 mm	1933 x 1170 mm
Interface	USB		USB	
Interactive penray	Yes	Yes	No	No
Aluminum frame	Yes	Yes	Yes	Yes
Shortcut bars	Yes	Yes	Yes	Yes
Software	Avtek Interactive Suite		Avtek Interactive Suite	
Warranty	3 years, lifetime for surface		3 years	
Product code	1TV051	1TV110	1TV068	1TV109

AVTEK INTERACTIVE SUITE



Avtek Interactive Suite helps during classes, presentations and every other situations where interactive functions of interactive whiteboards or interactive displays are used. It allows both working on previously made documents, editing them during the meeting or making them from scratch.

- Double page mode, where two students can work on their own pages simultaneously
- Two work modes: office mode and interactive mode. Office mode has interface resembling that of MS Office programs and allows intuitive access to all functions and is adapted to preparing materials. Second mode is designed for work on interactive whiteboard or interactive display: page area is maximized, most used functions quickly accessible and placed lower on the screen while user-customized floating toolbar will allow more personalization.
- Inserting local resources: images, video, sound and even MS Excell tables
- Created objects stay editable. Changing color, thickness, fill are possible after drawing an object. More over: adding a hyperlink, recording audio and replaying all changes done to every object is possible too!
- Advanced screenshot taking tool allows not only to choose between taking a screenshot of desktop or current software page, but also lets you choose exact shape of taken image and whether to save it to harddrive, paste into a page or both.

After turning the software on user is presented with MS Office-like interface separated into standard toolbars: File, Edit, Page, View, Draw, Insert and Tools. While less demanding users will be content with basic tools like different kind of pens, inserting objects and tools (like a ruler or set square), a more experienced one will be able to use more advanced tools: grouping object in a very quick way, editing drawn objects, replaying every action made with an object or on an entire page. Those last two functions plus function of recording sound for each object lets teacher use interesting pre-recorded lessons.

CHOOSE ACCESSORIES FOR THE INTERACTIVE WHITEBOARD



Soundbar – page 32



Mounts and brackets – page 28

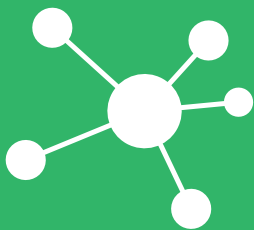


Projector mounts – page 26



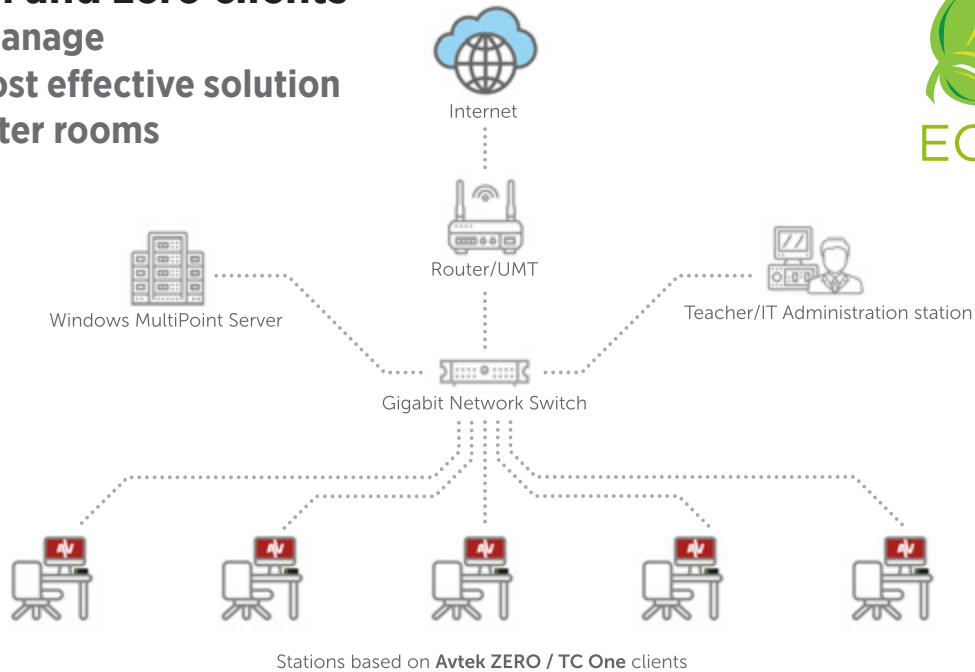
CENTRALIZED EDUCATION

THIN / ZERO CLIENTS



THIN / ZERO CLIENTS

Avtek thin and zero clients easy to manage and cost effective solution for computer rooms



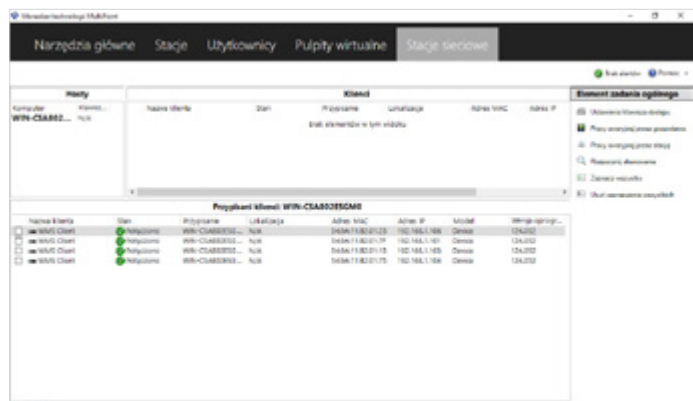
What is a thin/zero client based computer lab?

Thin and zero clients solution is an alternative to traditional computer labs, offering some strong benefits to the education sector and business environments alike. In a thin/zero client based computer lab, the noisy and bulky desktop PCs and clumsy laptops have been replaced with compact computer terminals installed on the rear of each display housing.

All such clients are connected to one central host – the server. Thanks to the dedicated architecture of the server machines and MultiPoint software, each workstation user in a terminal room can have their own separate desktop environment and can access a set of preinstalled applications.



Working with a thin/zero client based workstation feels identical to working with a conventional, standalone PC workstation, as each terminal is equipped with the same standard peripherals, such as a keyboard and a mouse, and supports all the well-known basic PC operation techniques. Need to access your own files? No problem at all! All you need to do is connect your pendrive to your terminal's USB port. The operating system's desktop, the applications, multimedia and internet access all work exactly in the same way and have the same look and feel as if they were used in a standard computer room.



Advantages of a thin or zero client based computer lab

Avtek thin or zero client based computer labs offer that employ Avtek terminals offer numerous advantages over computer rooms set up as networks of desktop or laptop PCs:

- Lower upfront implementation cost. The thin or zero client based computer lab can cost as much as 30% less compared to computer rooms composed of desktop or laptop computers.
- Lower administration costs. Installing software and setting up all the clients in the room is quick and easy.
- Domain controller equivalent features. Individual user accounts, simplified management, optional Active Directory domain controller integration
- Savings resulting from the significantly reduced power consumption. Each terminal draws as little as approx. 3.5W during normal operation.
- Better workspace management. Avtek clients are mounted on VESA brackets at the back of each display, so they do not occupy any space on the users' desks and make it easy to organise all the cabling.
- A working environment that is friendlier to users. Thin and zero clients do not generate any noise or heat, which increases the comfort of work.
- Centralised management through OS dashboard.



TECHNICAL SPECIFICATION



Model	Zero Client	Thin Client (TC One HDMI)
Chipset / Processor	SoC (System on Chip) SMSC UFX6000	ARM 2.0 GHz, 4 cores (Cortex A53)
RAM	-	512 Mb
ROM	-	4Gb, flash
Network card	10/100/1000 Mbps (RJ45 port)	
Supported OS and protocols	Windows Multipoint Server 2012 and 2016 / Linux Useful / RDP 8.1	
Max. supported resolution	1920x1080@60Hz	
Outputs	1x VGA 1x HDMI 5x USB 2.0 port 1x audio (mj 3,5 mm)	1x VGA 1x HDMI 4x USB 2.0 port 1x audio (mj 3,5 mm)
Inputs	1x power 1x RJ45 1x audio (mj 3,5 mm)	
Warranty	2 years	
Key points	Best budget-friendly solution for small classrooms (up to 10 workstations)	Flexible solution for any classroom size
Product code	1TV069	1TV134



APPEALING PROJECTIONS

PROJECTION
SCREENS



ELECTRIC SCREENS

PRODUCT DESCRIPTION

- White metal casing with unique square cross-section looks elegant in any room.
- Flat bottom of the casing ideal for in-ceiling installations.
- Special mounts make it ideal for ceiling or wall mounting.
- Plug&Play technology - screen ready to go as soon as it is plugged in without any configuration.
- Lower bar made of hard material protecting surface from creasing.
- High quality Matt White projection surface with gain factor 1.0 is perfect for every light conditions.
- Black frames increase perceived contrast ratio.
- Black TOP - screen can be positioned at viewer's eye level.
- It's enough to use the wired or wireless control to roll up or down the screen.
- Quiet tubular engine designed for intensive operation will do the rest of the work.



TECHNICAL SPECIFICATION

Model	Screen dimensions (cm)	Viewing area (cm)	Ratio	Side black frames (cm)	Black TOP (cm)	Black bottom (cm)	Product code
Video Electric 200	200 x 200	195 x 146	4:3	2.5	49	5	1EVE11
Video Electric 240	240 x 200	235 x 176	4:3	2.5	19	5	1EVE14
Video Electric 270	270 x 220	260 x 195	4:3	5	20	5	1EVE15
Video Electric 300P	300 x 227.5	290 x 217.5	4:3	5	5	5	1EVE54
Business Electric 200	200 x 200	190 x 122	16:10	2.5	73	5	1EVE45
Business Electric 240	240 x 200	235 x 147	16:10	2.5	48	5	1EVE46
Business Electric 270	270 x 220	260 x 162.5	16:10	5	52.5	5	1EVE47
Business Electric 300P	300 x 227.5	290 x 181.2	16:10	5	41.3	5	1EVE53
Cinema Electric 200	200 x 200	190 x 107	16:9	5	9	4	1EVE55
Cinema Electric 240	240 x 200	230 x 129.5	16:9	5	66.5	4	1EVE56

ELECTRIC SCREENS WALL SERIES

PRODUCT DESCRIPTION

- White metal casing looks elegant in any room.
- Special mounts make it ideal for ceiling or wall mounting.
- Plug&Play technology - screen ready to go as soon as it is plugged in without any configuration.
- It's enough to use the wired control to roll up or down the screen. Electric engine designed for intensive operation will do the rest of the work.
- Lower bar made of hard material protecting surface from creasing.
- Black frames increase perceived contrast ratio.



TECHNICAL SPECIFICATION

Model	Screen dimensions (cm)	Viewing area (cm)	Ratio	Side black frames (cm)	Black TOP (cm)	Black bottom (cm)	Product code
Wall Electric 180	185 x 143	180 x 135	4:3	2.5	2.5	2.5	1EVEE4
Wall Electric 200	205 x 158	200 x 150	4:3	2.5	2.5	2.5	1EVEE5
Wall Electric 240	245 x 188	240 x 180	4:3	2.5	2.5	2.5	1EVEE6

PRO MANUAL SCREENS

PRODUCT DESCRIPTION

- White metal casing with unique square cross-section looks elegant in any room.
- Flat bottom of the casing ideal for in-ceiling installations.
- Lower bar made of hard material protecting surface from creasing.
- Pull-up safety catch makes possible to roll down the screen and fit to any format.
- Special mounts make it ideal for ceiling or wall mounting.
- SRC System (Slow Return Control) for safe operation.
- Black frames increase perceived contrast ratio.
- Black TOP - screen can be positioned at viewer's eye level.
- High quality Matt White projection surface with gain factor 1.0 is perfect for every light conditions.



TECHNICAL SPECIFICATION

Model	Screen dimensions (cm)	Viewing area (cm)	Ratio	Side black frames (cm)	Black TOP (cm)	Black bottom (cm)	Product code
Video PRO 200	200 x 200	190 x 142.5	4:3	2.5	52.5	5	1EVS54
Video PRO 240	240 x 200	230 x 172.5	4:3	5	22.5	5	1EVS55
Business PRO 200	200 x 220	190 x 118.5	16:10	5	76.5	5	1EVS59
Business PRO 240	240 x 200	230 x 143.5	16:10	5	51.5	5	1EVS60

SPECIAL FEATURES OF ELECTRIC* AND PRO MANUAL SCREENS



Square cross-section



Ideal for ceiling or wall mounting

* excluding Wall series

MANUAL SCREENS

PRODUCT DESCRIPTION

- White metal casing looks elegant in any room.
- Special mounts make it ideal for ceiling or wall mounting.
- Lower bar made of hard material protecting surface from creasing.
- Pull-up safety catch makes possible to roll down the screen and fit to any format.
- High quality Matt White projection surface with gain factor 1.0 is perfect for every light conditions.
- Black frames increase perceived contrast ratio (Video, Business, Cinema).
- Black TOP - screen can be positioned at viewer's eye level (Video, Business, Cinema).

Manual screens are available in two versions (with or without black frames) and in four formats. Rolling up and down is manual which makes the screen both reasonably cheap and functional.



Video screens are suitable for traditional projectors with XGA (1.024 x 768) resolution. In case of Business and Cinema screens they have panoramic screens, perfect for projector with WXGA (1.280 x 800) and HD Ready or Full HD (1.280 x 720 or 1.920 x 1.080) resolution. Thanks to that the user can ideally fit the image from the projector to the dimensions of the screen to receive the best visual perception.



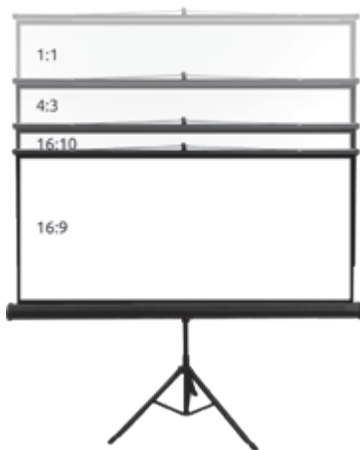
TECHNICAL SPECIFICATION

Model	Screen dimensions (cm)	Viewing area (cm)	Ratio	Side black frames (cm)	Black TOP (cm)	Black bottom (cm)	Product code
Wall 175	175 x 175	175 x 175	1:1	-	-	-	1EVS03
Wall 200	200 x 200	200 x 200	1:1	-	-	-	1EVS04
Video 175	175 x 175	170 x 127.5	4:3	2.5	44.5	3	1EVS23
Video 200	200 x 200	195 x 146.5	4:3	2.5	49.5	4	1EVS24
Video 240	240 x 200	230 x 172.5	4:3	5	23.5	4	1EVS25
Video 280	280 x 212.5	270 x 202.5	4:3	5	6	4	1EVS26
Business 200	200 x 200	190 x 119	16:10	5	77	4	1EVS56
Business 240	240 x 200	230 x 144	16:10	5	52	4	1EVS57
Business 280	280 x 200	270 x 169	16:10	5	27	4	1EVS58
Cinema 200	200 x 200	190 x 107	16:9	5	89	4	1EVS37
Cinema 240	240 x 200	230 x 129.5	16:9	5	66.5	4	1EVS38

PORTABLE SCREENS

PRODUCT DESCRIPTION

- Black metal casing looks elegant in any conditions and rooms.
- Thanks to special tripod and projection surface the screen can be easily kept in vertical position and it doesn't take too much space.
- Folded screen is lightweight and portable.
- Lower bar and upper bar height adjustment is possible with the special handles to position the screen at viewer's eye level. This also allows the user to obtain any format ratio (1:1, 4:3, 16:9, 16:10) to fit to any projector.
- Keystone effect eliminated by special arm that adjusts screen angle. The image is not distorted when the projector is not perpendicular to the screen surface.
- High quality Matt White projection surface with gain factor 1.0 is perfect for every light conditions.
- Black frames increase perceived contrast ratio (Tripod PRO).
- Strengthened tripod construction for extreme stability (Tripod PRO).
- Optional screen cover helps with even easier transportation.



Possibility to adjust the screen ratio to the projector image.

Portable screens assures mobility and easiness of displaying image. They are an universal solution to any type of projector or OHP. The screens are available in two versions (with or without black frames) and width from 150 to 200 cm.

TECHNICAL SPECIFICATION

Model	Screen dimensions (cm)	Viewing area (cm)	Ratio	Side black frames (cm)	Black TOP (cm)	Black bottom (cm)	Product code
Tripod Standard 150	150 x 150	150 x 150	1:1	-	-	-	1EVT02
Tripod Standard 175	175 x 175	175 x 175	1:1	-	-	-	1EVT03
Tripod Standard 200	200 x 200	200 x 200	1:1	-	-	-	1EVT04
Tripod PRO 180	180 x 180	175 x 175	1:1	2.5	2.5	2.5	1EVT13
Tripod PRO 200	200 x 200	195 x 195	1:1	2.5	2.5	2.5	1EVT14

SCREEN COVER

PRODUCT DESCRIPTION

- Universal cover for the projection screen preventing from dirt simplifying transportation thanks to the arm band.
- Cross section 20 x 20 cm and 195 cm or 215 cm length.
- Fits most of the portable screens on the market.

PRODUCT CODE

195 cm - 1EVA01
215 cm - 1EVA02



LARGE SCALE FOLD SCREENS

Large scale screens are perfect for projections in rooms and in open air. Fold frame screens are available in two formats (4:3 and 16:9). Each format has five sizes, which makes it easier to fit the screen to projection requirements.

PRODUCT DESCRIPTION

- Stable, silver color aluminum foldable frame.
- Ideal for large-scale projections both indoors and outdoors.
- Quick and simple assembly (no tools needed).
- Surface is fixed to frame with metal press studs which can be pressed by hand.
- Black frames increase perceived contrast ratio.
- Convenient, black case on castor wheels for easy transportation and carriage.
- Height adjustment is easy with special screws.
- Front projection surface is standard accessory.
- Optional rear projection surface for displaying the image from a projector installed at the back of the screen.





Press stud mounted surface



Fast and easy folding



Height adjustment

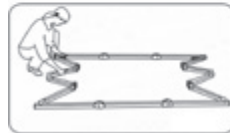
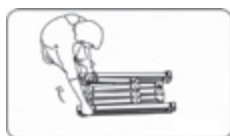
FOLD SCREEN TECHNICAL SPECIFICATION

Model	Screen dimensions (cm)	Viewing area (cm)	Ratio	Side black frames (cm)	Black TOP (cm)	Black bottom (cm)	Case dimensions (cm)	Product code
Fold 240 (4:3)	236.8 x 202.9	243.8 x 182.9	4:3	10	10	10	99 x 31 x 54	1EVF11
Fold 300 (4:3)	324.8 x 248.6	304.8 x 228.6	4:3	10	10	10	119 x 31 x 60	1EVF12
Fold 360 (4:3)	385.8 x 294.3	365.8 x 274.3	4:3	10	10	10	119 x 31 x 66	1EVF13
Fold 400 (4:3)	426.4 x 324.8	406.4 x 304.8	4:3	10	10	10	119 x 31 x 66	1EVF14
Fold 500 (4:3)	528 x 401	508 x 381	4:3	10	10	10	152.5 x 36 x 36 ¹ 152.5 x 36 x 6 ²	1EVF15
Fold 180 (16:9)	219.2 x 130.3	203.2 x 114.3	16:9	8	8	8	93 x 31 x 45	1EVF16
Fold 220 (16:9)	263.8 x 157	243.8 x 137.2	16:9	10	10	10	99 x 31 x 54	1EVF17
Fold 280 (16:9)	324.8 x 193	304.8 x 172.7	16:9	10	10	10	119 x 31 x 60	1EVF18
Fold 340 (16:9)	385.8 x 226	365.8 x 205.7	16:9	10	10	10	119 x 31 x 66	1EVF19
Fold 380 (16:9)	426.4 x 249	406.4 x 228.6	16:9	10	10	10	119 x 31 x 66	1EVF20

1) Case for the frame

2) Case for the support and surface

Screen folding





FAST AND SECURE

MOUNTING
SYSTEMS



CEILING PROJECTOR MOUNTS

EASYMOUNT

PRODUCT DESCRIPTION

- Possibility to mount directly on the ceiling (12 cm) or in 43 – 65 cm distance – thanks to regulation it's perfect for installation in typical offices or classrooms.
- Maximum spacing between assembly holes up to 32 cm and maximum projector weight up to 10 kg makes it possible to fit the mount to most of the portable projectors.
- Cable without a connector can be pulled through so it's easier to hide it inside the mount.
- +/- 15° tilt and +/- 22.5° side tilt helps to fit the displayed image precisely and easy to the projection surface.
- Optional extension pole gives the possibility to mount the projector at any distance from the ceiling.
- Color: white.
- Material: steel.

PRODUCT CODE: **1MVEM2**



EASYMOUNT EXTENSION

EXTENSION POLE FOR EASYMOUNT

- After combining with EasyMount the mounting distance can be regulated from 71 cm to 122 cm or even 102 cm to 175 cm when all the elements are used.
- It's possible to connect more extensions to make bigger distance from the ceiling.
- Smooth length regulation allows the projector to be installed at any level.
- Material: steel.

PRODUCT CODE: **1MVEM3**



PROMOUNT DIRECT

PRODUCT DESCRIPTION

- Possibility to mount directly on the ceiling (13 cm) – ideal for installation in low ceiling rooms.
- Ball joint for precise tilt regulation up to 25° and 360° rotation simplifies the adjustment to the projection surface.
- Precise regulation of the projector position with threaded distancing tubes for best image performance.
- Maximum spacing between assembly holes up to 38 cm and maximum projector weight up to 25 kg makes it possible to fit even bigger and heavier projectors.
- Cable can be pulled through so it's easier to hide it inside the mount.
- Optional extension pole gives the possibility to mount the projector at bigger distance from the ceiling.
- Color: silver.
- Material: aluminum.

PRODUCT CODE: **1MVPM5**



PROMOUNT DIRECT EXTENSION

EXTENSION POLE FOR PROMOUNT DIRECT

- Together with ProMount the mounting distance can be regulated from 61 cm to 120 cm.
- The length regulation is with pitch of 3 cm.
- Cable with connector up to 25 mm wide can be pulled through.
- Material: aluminum.

PRODUCT CODE: **1MVPM6**



WALL PROJECTOR MOUNTS

WALLMOUNT NEXT 1200

PRODUCT DESCRIPTION

- Distance from the mounting point 78 - 120 cm
- Vertical rotation: 360°; tilts: +/- 42°
- Maximum spacing between assembly holes - 39 cm
- Max. projector weight 20 kg
- Cables can be pulled through

PRODUCT CODE: **1MVWM11**



WALLMOUNT PRO 1200 / 1500

PRODUCT DESCRIPTION

- Maximum spacing between assembly holes up to 30 cm and maximum projector weight up to 10 kg makes it possible to fit the mount most of the portable projectors.
- The projection distance can be regulated (from 63.5 up to 116.5 cm - WallMount Pro 1200 and from 83.5 up to 146.5 cm - WallMount Pro 1500) gives the possibility to adjust the image size from short throw projector to the interactive whiteboard size.
- Possibility to tilt the projector 42° in both axes simplifies the installation and adjustment to the projection surface.
- Cable can be pulled through so it's easier to hide it inside the mount.
- Plastic cover to hide the wall mounting plate.
- Color: white.
- Material: aluminum.

PRODUCT CODE:

WallMount Pro 1200 - **1MVWM8**

WallMount Pro 1500 - **1MVWM9**



MOUNTING SYSTEMS FOR INTERACTIVE WHITEBOARDS

REGULATED WALL MOUNT

PRODUCT DESCRIPTION

- Wall mounted bracket for Interactive Whiteboards,
- Smooth, manual height adjustment in 40 cm range,
- Universal short-throw projector arm included,
- Maximum load 32 kg (IWB + projector),
- Maximum projector weight 6 kg,
- Projector arm adjusts in the range of 80 cm - 140 cm,
- Gas springs,
- Solid steel construction.

PRODUCT CODE:

up to 32 kg **1MV011** | up to 50 kg **1MV026**



MOBILE REGULATED STAND

PRODUCT DESCRIPTION

- Mobile bracket for Interactive Whiteboards,
- Mobile stand for easy transportation,
- Smooth, manual height adjustment in 40 cm range,
- Universal short-throw projector arm included,
- Maximum load 32 kg (IWB + projector),
- Maximum projector weight 6 kg,
- Projector arm adjusts in the range of 80 cm - 140 cm,
- Gas springs,
- Solid steel construction.

PRODUCT CODE:

up to 32 kg **1MV013** | up to 50 kg **1MV027**



STAND FOR INTERACTIVE WHITEBOARDS

PRODUCT DESCRIPTION

- Mobile bracket for Interactive Whiteboards,
- Mobile stand for easy transportation with plastic castors,
- For boards with height from 120 cm to 137 cm,
- Boards with any width can fit,
- Solid steel construction.

PRODUCT CODE: **1MV009**



INTERACTIVE WHITEBOARD STAND WITH PROJECTOR ARM

PRODUCT DESCRIPTION

- Mobile stand for interactive whiteboards,
- For boards with height from 120 cm - 137 cm,
- Integrated universal projector mount,
- Length of the projector mount arm from 80 cm - 140 cm,
- Width of the board is not limited,
- Mobile stand on plastic castors that can be blocked,
- Solid steel construction.

PRODUCT CODE: **1MV032**



MOUNTING SYSTEMS FOR TOUCHSCREENS

TOUCHSCREEN MOBILE STAND PRO

MOBILE STAND FOR INTERACTIVE DISPLAYS

TouchScreen Mobile Stand Pro is a mobile stand for interactive screens. It allows you to comfortably install a screen and then lets you move it around on a stable, elegant and minimalistic construction. Quality materials and solid framework allows to use it with even the biggest screens.

- Max. load 150 kg
- Big shelf for a computer or other accessories
- Stable, solid construction
- Black color
- Rubbered wheels makes moving it easy and quiet
- Wheels can be blocked for safety

PRODUCT CODE (for Avtek monitors): **1MV041T**

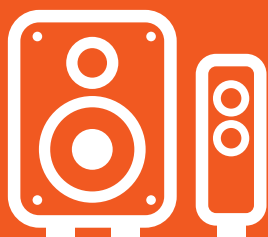
PRODUCT CODE (for other monitors): **1MV041Z**





FOR THE DESIRED EFFECT

ACCESORIES



ACCESSORIES



AVTEK SOUNDBAR

Stereo soundbar is perfect for small and medium classrooms and conference rooms, best used to extend sound quality from TVs, Touch Screens, Interactive Whiteboards and computers.

- 2x 18W RMS
- Perfect for any TV, Touch Screen, Interactive Whiteboard or computer
- Wireless Bluetooth connection
- Inputs: Optical, Audio, RCA
- Three sound modes: music, movie and voice
- Remote control
- Wall mount kit included
- Subwoofer output

PRODUCT CODE: **1SVS08**

BAG+

UNIVERSAL PROJECTOR BAG

- Protective 10 mm foam increases the safety of the projector,
- Holds any projector of size up to 270 x 110 x 350 mm,
- Additional, small pocket for remote control inside,
- 2 velcro bars for space organization and content protection,
- External pocket for cables & accessories (290 x 260 mm),
- Comfortable carry handle and removable arm belt,
- Made of durable PVC600D nylon.
- Color: black



PRODUCT CODE: **1AV004**

HDMI CABLE

V 1.4 HDMI CABLE

- HDMI cable – the most popular digital standard for video and audio transmission,
- High wire cross sections assures high quality signal,
- Ferrite rings reducing signal noise,
- HDMI v. 1.4 allows transmission of signal with resolution up to 4.096 x 2.160,
- length: 10 m
- Color: black.



PRODUCT CODE: **1KV007**

AVTEK IWB CLEANER

Whiteboard surface cleaning detergent. Works great for everyday cleaning of both whiteboards and interactive whiteboards, removes small stains and dry erase marker prints.

PRODUCT CODE: **1TV049**



AVTEK MARKER

Dry erase markers for whiteboards and interactive whiteboards. Thanks to four colors user can clearly separate different informations and high quality ink allows quick writing and erasing.

PRODUCT CODE: **1TV048**



WARRANTY

High quality and reliability of all Avtek products is confirmed by 3 years European Warranty with some exceptions listed in the table below.

Interactive displays:

Model	Warranty
TouchScreen 5 Lite TouchScreen 5 Connect OPS 4K i3, i5	standard warranty of 3 years, 2 years for panel – longer warranty may be offered in your region, contact your local dealer for more information 2 years

Interactive whiteboards:

Model	Warranty
TT-BOARD 80, 90	3 years (optional extension to 5 years)
TT-BOARD 80 Pro, 90 Pro	3 years (optional extension to 5 years), lifetime warranty for the surface



INDEX

PRODUCT	PAGE	PRODUCT	PAGE
INTERACTIVE DISPLAYS		PORTABLE SCREENS	
TOUCHSCREEN 5 LITE 55	7	TRIPOD STANDARD 150	21
TOUCHSCREEN 5 LITE 65	7	TRIPOD STANDARD 175	21
TOUCHSCREEN 5 CONNECT 65	7	TRIPOD STANDARD 200	21
TOUCHSCREEN 5 CONNECT 75	7	TRIPOD PRO 180	21
TOUCHSCREEN 5 CONNECT 86	7	TRIPOD PRO 200	21
		SCREEN COVER	21
INTERACTIVE WHITEBOARDS		LARGE SCALE FOLD SCREENS	
TT-BOARD 80 PRO	10	FOLD 240 (4:3)	23
TT-BOARD 90 PRO	10	FOLD 300 (4:3)	23
TT-BOARD 80	10	FOLD 360 (4:3)	23
TT-BOARD 90	10	FOLD 400 (4:3)	23
		FOLD 500 (4:3)	23
TERMINAL CLIENTS		FOLD 180 (16:9)	23
ZERO CLIENT	15	FOLD 220 (16:9)	23
THIN CLIENT (TC ONE HDMI)	15	FOLD 280 (16:9)	23
		FOLD 340 (16:9)	23
ELECTRIC SCREENS		FOLD 380 (16:9)	23
VIDEO ELECTRIC 200	18	CEILING PROJECTOR MOUNTS	
VIDEO ELECTRIC 240	18	EASYMOUNT	26
VIDEO ELECTRIC 270	18	EASYMOUNT EXTENSION	26
VIDEO ELECTRIC 300P	18	PROMOUNT DIRECT	26
BUSINESS ELECTRIC 200	18	PROMOUNT DIRECT EXTENSION	26
BUSINESS ELECTRIC 240	18	WALL PROJECTOR MOUNTS	
BUSINESS ELECTRIC 270	18	WALLMOUNT NEXT 1200	27
BUSINESS ELECTRIC 300P	18	WALLMOUNT PRO 1500	27
CINEMA ELECTRIC 200	18	MOUNTING SYSTEMS FOR INTERACTIVE WHITEBOARDS	
CINEMA ELECTRIC 240	18	REGULATED WALL MOUNT	28
ELECTRIC SCREENS WALL SERIES		MOBILE REGULATED STAND	28
WALL ELECTRIC 180	18	STAND FOR INTERACTIVE WHITEBOARDS	28
WALL ELECTRIC 200	18	INTERACTIVE WHITEBOARD STAND WITH PROJECTOR ARM	29
WALL ELECTRIC 240	18	MOUNTING SYSTEMS FOR DISPLAYS	
MODULE FOR REMOTE CONTROL	18	TOUCHSCREEN MOBILE STAND PRO	29
PRO MANUAL SCREENS		ACCESSORIES	
VIDEO PRO 200	19	SOUNDBAR	32
VIDEO PRO 240	19	BAG+	32
BUSINESS PRO 200	19	HDMI CABLE	32
BUSINESS PRO 240	19	IWB CLEANER	33
		MARKER	33
MANUAL SCREENS			
WALL 175	20		
WALL 200	20		
VIDEO 175	20		
VIDEO 200	20		
VIDEO 240	20		
VIDEO 280	20		
BUSINESS 200	20		
BUSINESS 240	20		
CINEMA 200	20		
CINEMA 240	20		





Avtek

Avtek brand is owned by:

ViDiS S.A.

Logistyczna 4

Bielany Wrocławskie

55-040 Kobierzyce

tel.: +48 71 33 880 00

www.avtek.eu